



What's Your Green Strategy? The Convergence of Sustainability and Business Software.

16 June, 2008

Jeff Frank
Vice President
jeffrey.frank@lawson.com

“It’s not easy bein’ green.”

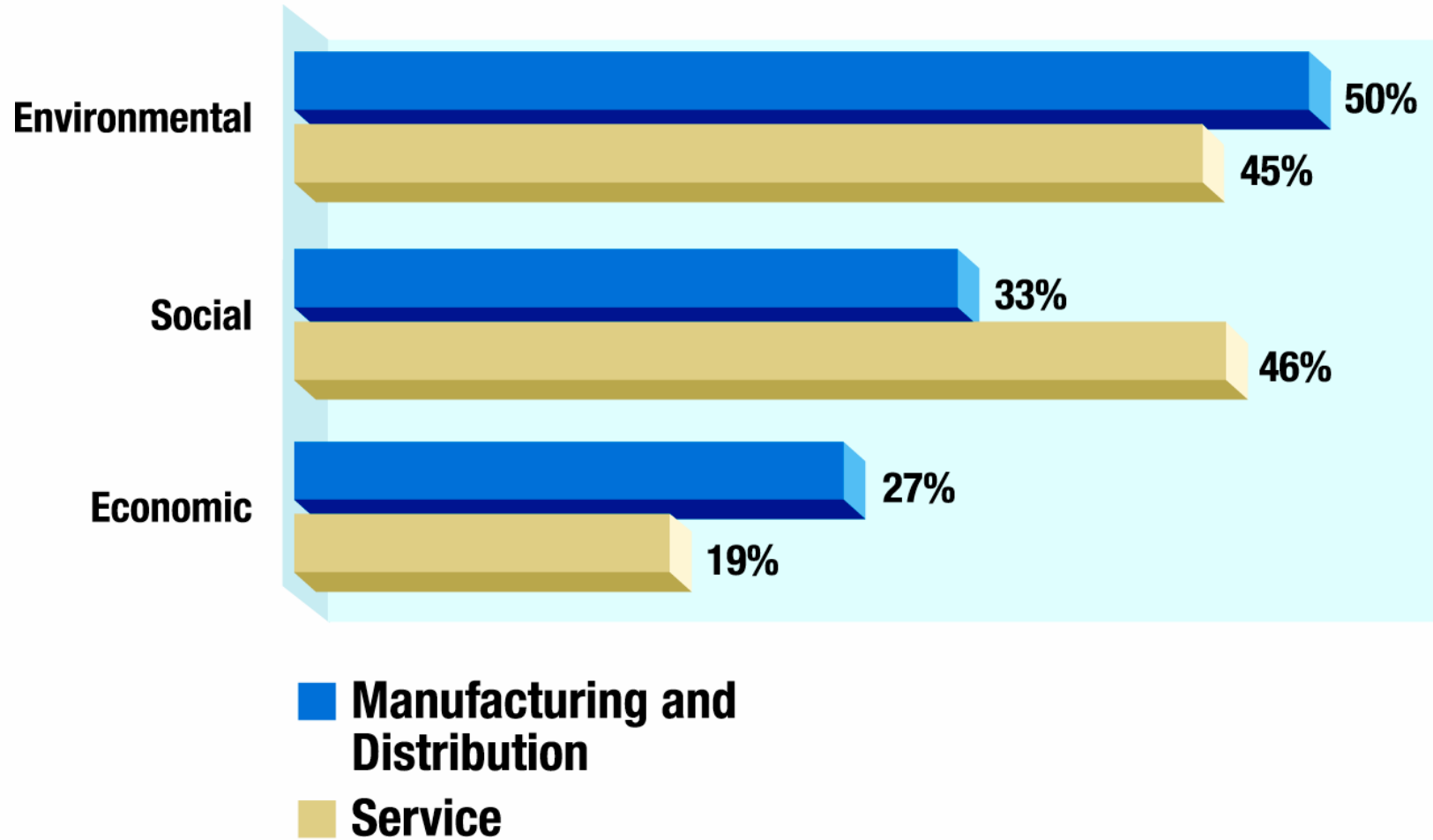
Kermit the Frog

Overview

- ▶ Key trends in sustainability
- ▶ How leaders are approaching sustainability
- ▶ Strategic role of business software

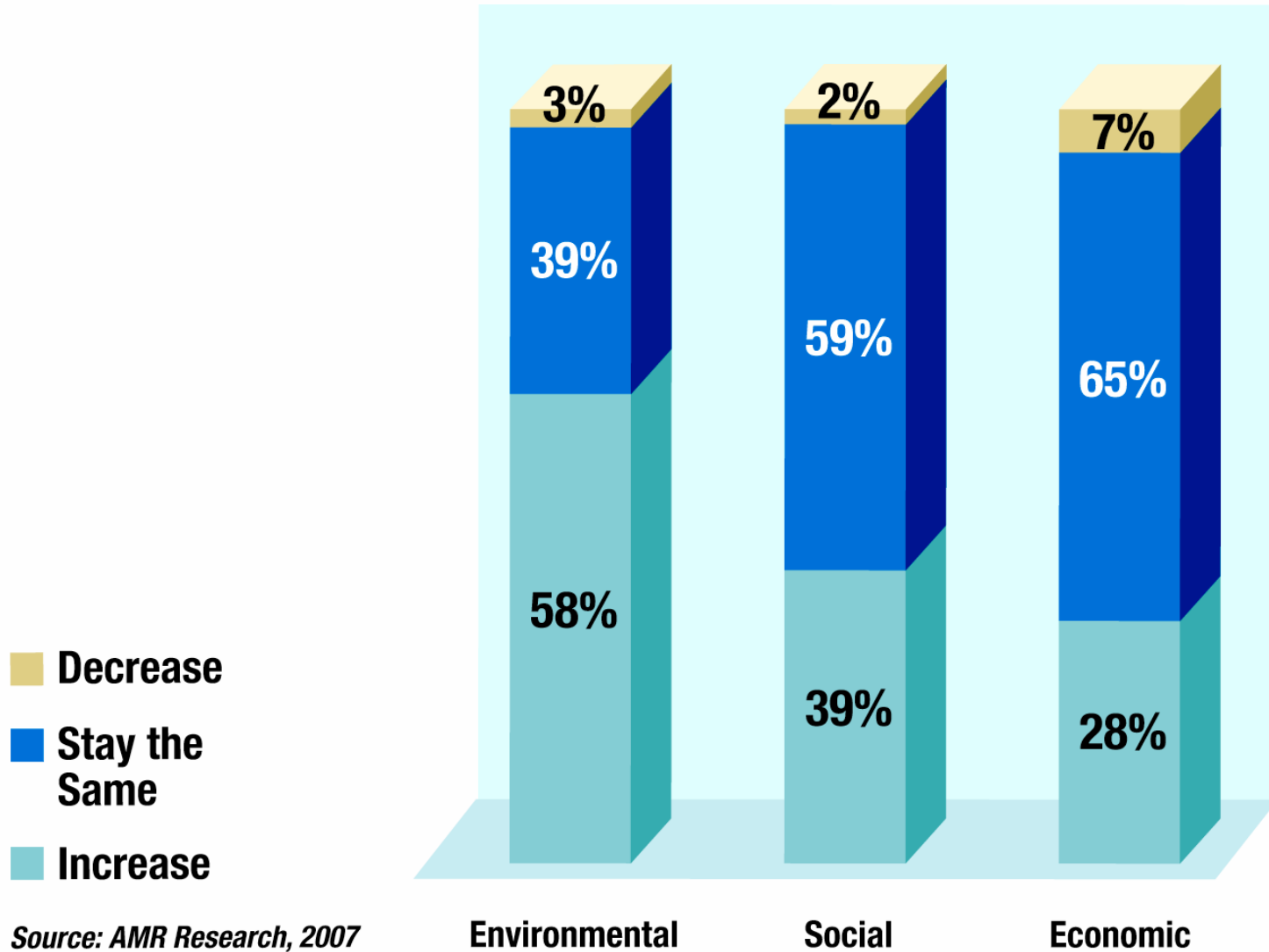
Key Trends in Sustainability

Areas of CSR Investment – Today

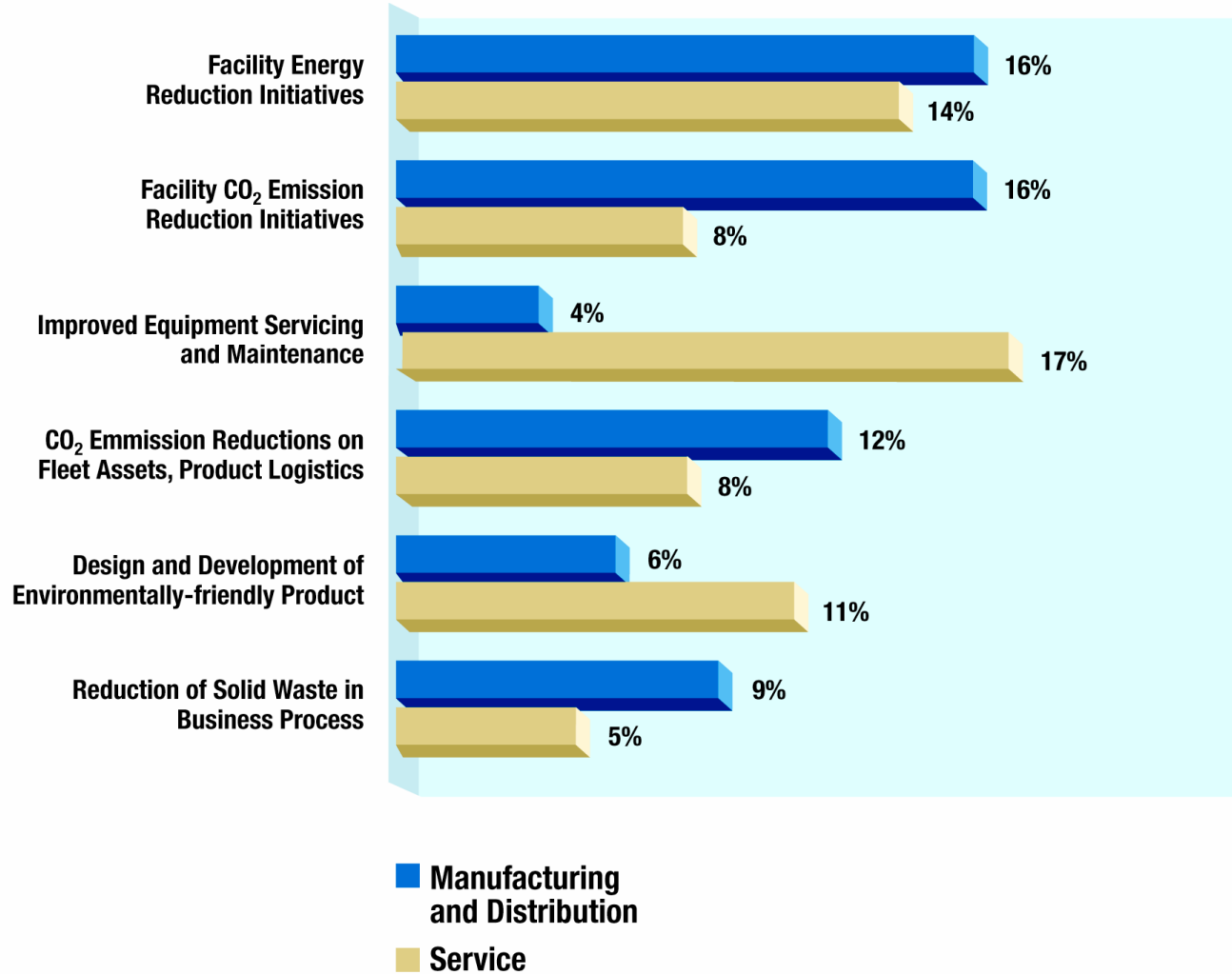


Source: AMR Research, 2007

Areas of CSR Investment – Future



Most Important Sustainability Programs



Source: AMR Research, 2007

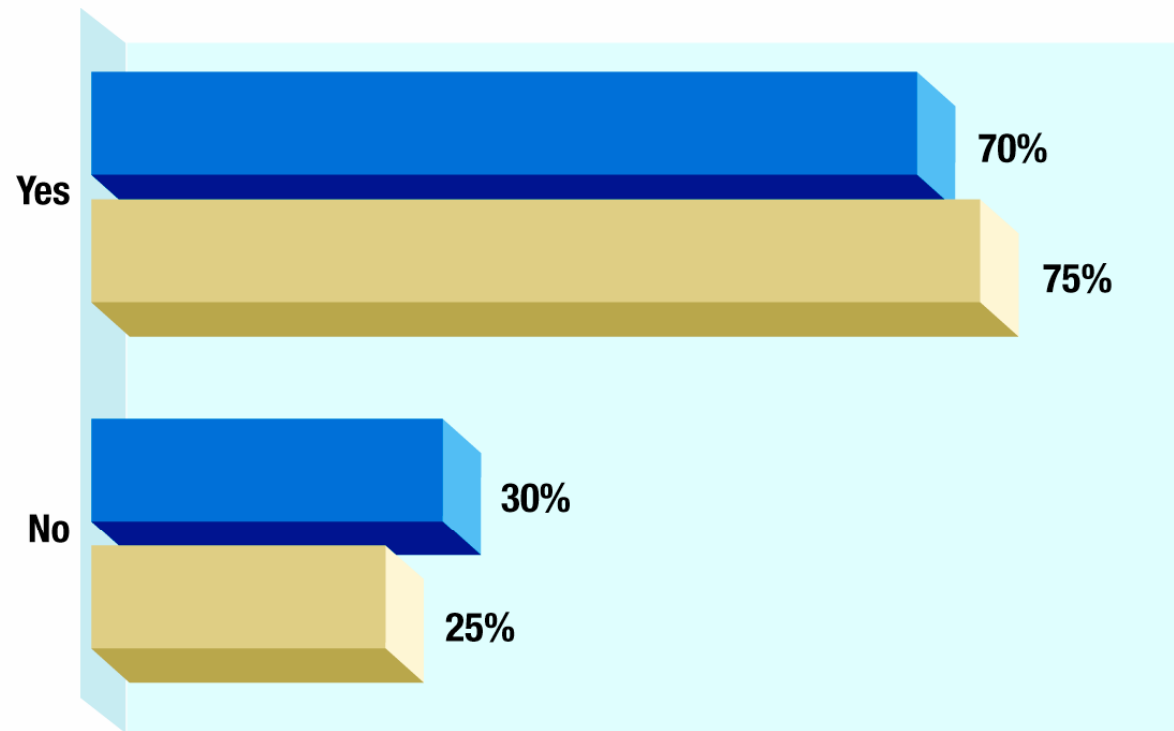
How Leaders are Approaching Sustainability

Common Threads

- ▶ Senior executive sponsor
- ▶ Life-cycle approach
- ▶ Establish clear objectives and measure performance
- ▶ Effective use of technology

Strategic Role of Business Software

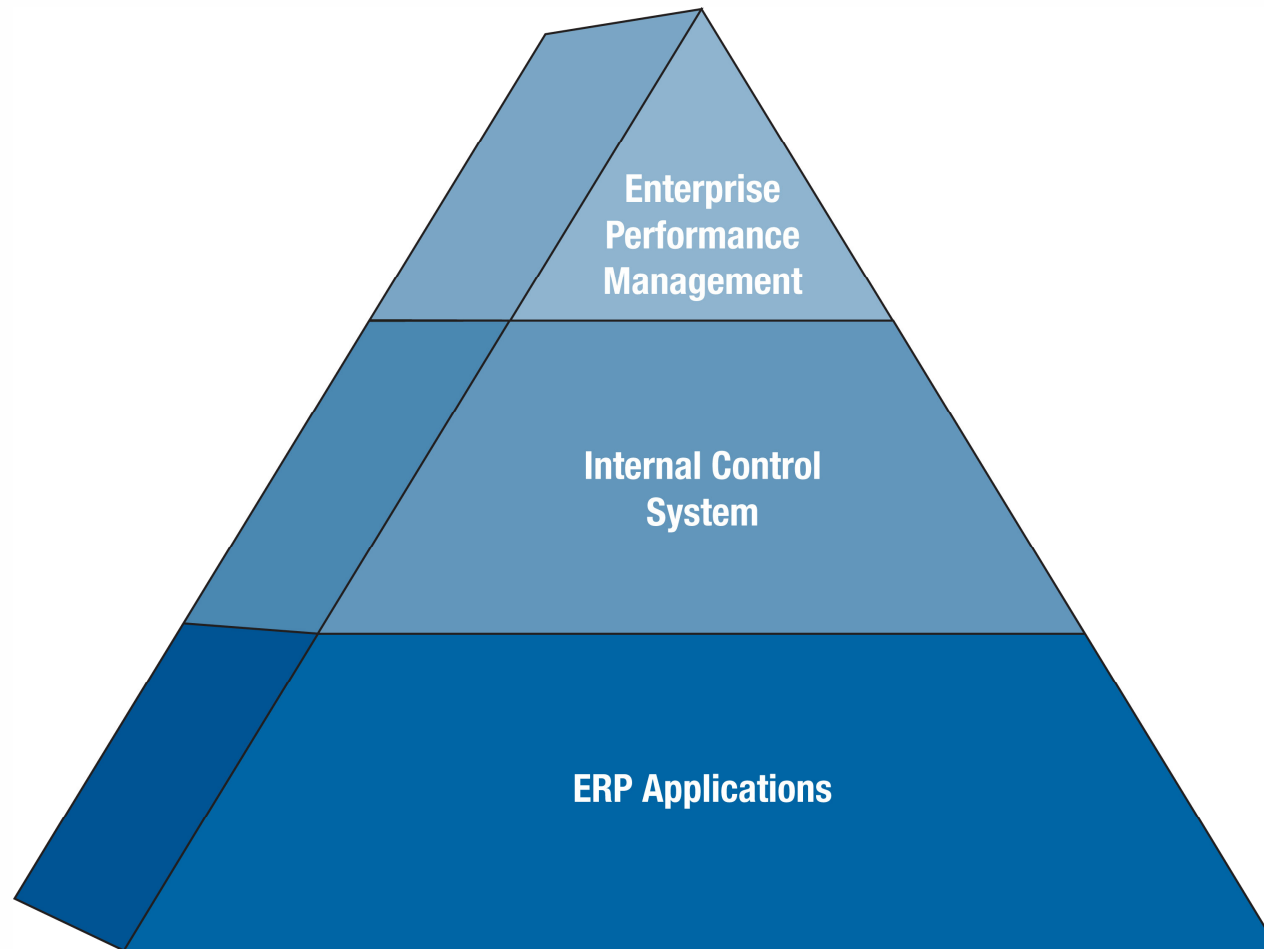
Plans to Use Business Software



- Manufacturing and Distribution
- Service

Source: AMR Research, 2007

Business Software Framework for Sustainability



Sustainability Dashboard

Lawson Business Intelligence - Microsoft Internet Explorer provided by Lawson

http://ll38f34w.corpnet.lawson.com:8282/efs/go

Lawson Business Intelligence

Environmental Dashboard

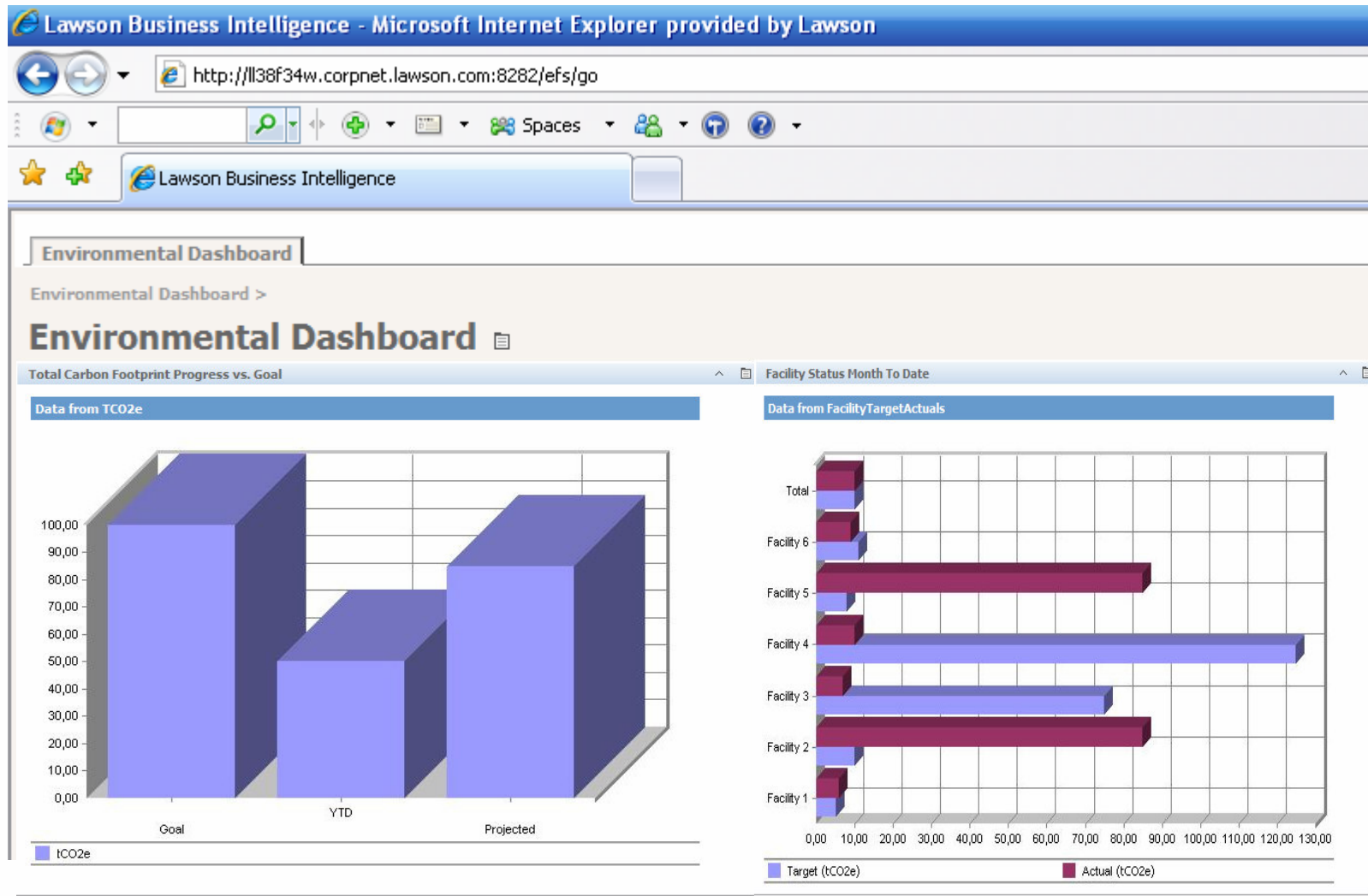
Environmental Dashboard >

Environmental Dashboard

Environmental Dashboard

Data from Environment									
Component	Company	Facility-1	Facility-2	Facility-3	Facility-4	Facility-5	Facility-6	Goal	Options
Water Use	●	●	●	●	●	●	●	6% cumulative avoidance	Details
Electricity Use	●	●	●	●	●	●	●	85% best practices 11% reduction	Details
Raw Material Waste	●	●	●	●	●	●	●	3% cumulative avoidance	Details
Packaging Waste	●	●	●	●	●	●	●	5% cumulative avoidance	Details
Waste Reduction (non-production)	●	●	●	●	●	●	●	4% improvement	Details
Recycling	●	●	●	●	●	●	●	5% improvement	Details

Sustainability Dashboard



Delta Galil Industries

DELTA
GALIL INDUSTRIES LTD.

- ABOUT US
- PRODUCTS
- CUSTOMERS
- ADDED VALUE
- SOCIAL RESPONSIBILITY**
 - ENVIRONMENT
 - COMMUNITY
- INVESTOR RELATIONS

Environment

Delta adheres to a strict code of practice to ensure that no materials, dyes or chemicals used in the production process of our fabrics and garments present an unacceptable risk to health or to the environment during their manufacture, use or disposal.

All of the dyes and chemicals used in the manufacturing process are accompanied by a safety data sheet from supplier giving adequate warning of the health, safety and environmental hazards of that product and advice on appropriate measures for its safe storage, use and disposal. We purchase dye materials from suppliers that are members of the ETAD (Ecological and Toxicological Association of Dyes and organic pigments manufacturers).

We minimize our workforce's exposure to toxic materials by handling chemicals according to high industrial hygiene standards and safe working practices and procedures.

In 2004, a wastewater treatment system was installed at our facilities, through which sewage is being treated prior to its discharge into the water.

Our environmental management system is implemented every day in order to ensure and demonstrate Delta's care and commitment to the environment. Delta is also

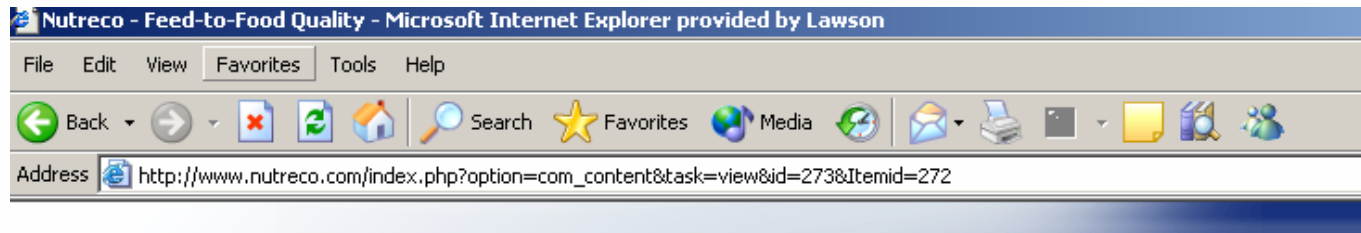
IF YOU CAN'T SEE TEXTS, CLICK HERE [CONTACT US](#) [SITE MAP](#) [CREDITS](#) [LEGAL](#)

DELTA
גליל
תעשיית
בגדים

Sustainability at Delta Galil Industries

- ▶ Use of sustainable and recycled fibers, yarns and accessories – examples include organic cotton, bamboo, hemp and linen
- ▶ Reducing fabric dye cycles
- ▶ Reducing product packaging
- ▶ Use of non-toxic chemicals in fabrics production
- ▶ Development of fabrics that require shorter wash cycles and can be washed in cold water
- ▶ Bringing the supply chain – suppliers to manufacturer to customers – physically closer

Nutreco



Nutreco Holding N.V. is an international animal nutrition and food chain expertise. The company holds selected businesses. The company's strategy aims to regain solid profit growth, reduce costs and improve capital.

[About Nutreco](#) | [Investor Relations](#) | [Press Room](#) | [Research & Development](#) | [Corporate Governance](#) | [Corporate Social Responsibility](#) | [Careers](#)

You are here: [Home](#) > [Corporate Social Responsibility](#) > [CSR in Nutreco](#) > [Feed-to-Food Quality](#)

Corporate Social Responsibility

> [Message from the CEO](#)

CSR in Nutreco

» [Management of Resources](#)

» Feed-to-Food Quality

» [Climate Change](#)

» [People in Community](#)

> [Stakeholder dialogues](#)

> [Partnerships](#)

> [HSEQ](#)

> [CSR report](#)

> [Contact](#)

Feed-to-Food Quality

Animal and fish feeds have a direct influence on the quality of the final food products. In addition, feeds can be the source of food safety problems. For these reasons, any advances are important for Nutreco, for its customers and for consumers. This priority area provides an opportunity to bring together and monitor actions across the business.

Nutreco already has actions in this area, for example with the development of NuTrace®, the Nutreco feed and food safety programme that is effective over all Nutreco businesses, and participation in TrusQ, the coordinated feed safety programme involving the leading animal feed suppliers of the Netherlands.

NuTrace®

We adopted the name NuTrace to bring together the combination of specific measures we use in Nutreco to ensure feed and food safety. It starts with the raw materials we use to make the feeds and continues through to the finished feeds and food products. NuTrace incorporates components - Certified Quality, Monitoring, Risk Management and Tracking & Tracing. This NuTrace approach fits with the Global Food Safety Initiative, which was developed by CIES, an international food business forum established by leading retailers.

jeffrey.frank@lawson.com